

Alfadiar® 5 / Alfadiar® 20 / Alfadiar® 40

tabletten met smaakstof voor honden en katten

SAMENSTELLING

Elke tablet bevat:

| | Alfadiar 5 | Alfadiar 20 | Alfadiar 40 |
|--------------------|------------|-------------|-------------|
| Kaolin | 112,5 mg | 450 mg | 900 mg |
| Natriumalgiinaat | 10 mg | 40 mg | 80 mg |
| Calciumcarbonaat | 1,35 mg | 5,4 mg | 10,8 mg |
| Magnesiumcarbonaat | 0,89 mg | 3,56 mg | 7,12 mg |
| Natriumchloride | 17,5 mg | 70 mg | 140 mg |

DOELDIEREN

Hond en kat.

TOEPASSINGEN

Als ondersteuning van dieetmaatregelen bij aandoeningen van het maagdarmkanaal bij hond en kat.

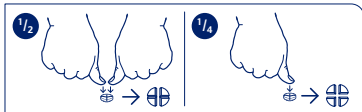
TOEDIENINGSWIJZE EN DOSERING

Oraal toedienen, gedurende 3 tot 5 dagen, volgens het onderstaande schema. Het is raadzaam het voedingsadvies van de dierenarts te volgen.

| Lichaamsgewicht (kg) | Alfadiar 5 KG | | Alfadiar 20 KG | | Alfadiar 40 KG | |
|----------------------|---------------|-------|----------------|-------|----------------|-------|
| | Ochtend | Avond | Ochtend | Avond | Ochtend | Avond |
| 0 – 1,25 kg | ⊔ | ⊔ | | | | |
| >1,25 – 2,5 kg | ⊔ | ⊔ | | | | |
| > 2,5 – 3,75 kg | ⊕ | ⊕ | | | | |
| >3,75 – 5 kg | ⊕ | ⊕ | | | | |
| > 5 – 6,25 kg | ⊕ ⊔ | ⊕ ⊔ | | | | |
| > 6,25 – 7,5 kg | ⊕ ⊔ | ⊕ ⊔ | | | | |
| > 7,5 – 8,75 kg | ⊕ ⊕ | ⊕ ⊕ | | | | |
| > 8,75 – 10 kg | | | ⊔ | ⊔ | | |
| > 10 – 15 | | | ⊕ | ⊕ | | |
| > 15 – 20 kg | | | ⊕ | ⊕ | | |
| > 20 – 25 kg | | | ⊕ ⊔ | ⊕ ⊔ | | |
| > 25 – 30 kg | | | ⊕ ⊔ | ⊕ ⊔ | | |
| > 30 – 35 kg | | | ⊕ ⊕ | ⊕ ⊕ | | |
| > 35 – 40 kg | | | | | ⊕ | ⊕ |
| > 40 – 50 kg | | | | | ⊕ ⊔ | ⊕ ⊔ |
| > 50 – 60 kg | | | | | ⊕ ⊔ | ⊕ ⊔ |
| > 60 – 70 kg | | | | | ⊕ ⊕ | ⊕ ⊕ |
| > 70 – 80 kg | | | | | ⊕ ⊕ | ⊕ ⊕ |

⊔ = ¼ tablet ⊔ = ½ tablet ⊕ = ¾ tablet ⊕ = 1 tablet

Om een nauwkeurige dosering te garanderen kunnen de tabletten verdeeld worden in gelijke helften of kwarten. Plaats de tablet op een plat oppervlak, met de breukstreep boven en de bolle zijde onder.



Gelijke helften: druk met beide duimen op beide zijden van de tablet.
Gelijke kwarten: druk met de duim op het midden van de tablet.

BIJWERKINGEN

Geen bekend. Indien u ernstige bijwerkingen of andersoortige reacties vaststelt die niet in deze bijsluiter worden vermeld, wordt u verzocht uw dierenarts hiervan in kennis te stellen.

BEWARING

Niet gebruiken na de uiterste gebruiksdatum vermeld op het etiket na EXP. Beneden 25°C in goed gesloten verpakking. Buiten het zicht en bereik van kinderen bewaren.

VERPAKKINGEN

Kartonnen omdoos met 1 blister à 10 tabletten.

AANVULLEND DIERVOEDER

Distributeur: Alfasan Diergeneesmiddelen B.V.

Producent: Lelypharma B.V.

Vergunningnummer 40101

Alfadiar® 5 / Alfadiar® 20 / Alfadiar® 40

flavoured tablets for dogs and cats

COMPOSITION

Each tablet contains:

| | <i>Alfadiar 5</i> | <i>Alfadiar 20</i> | <i>Alfadiar 40</i> |
|---------------------|-------------------|--------------------|--------------------|
| Kaolin | 112.5 mg | 450 mg | 900 mg |
| Sodium alginate | 10 mg | 40 mg | 80 mg |
| Calcium carbonate | 1.35 mg | 5.4 mg | 10.8 mg |
| Magnesium carbonate | 0.89 mg | 3.56 mg | 7.12 mg |
| Sodium chloride | 17.5 mg | 70 mg | 140 mg |

TARGET SPECIES

Dog and cat.

APPLICATIONS

To support dietary measures in diseases of the gastrointestinal tract in dogs and cats.

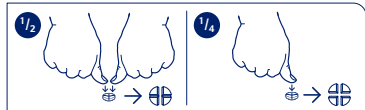
METHOD OF USE AND ROUTE OF ADMINISTRATION

For oral use, during 3 to 5 days, according to the following table. It is advised to follow the dietary advice of the veterinarian.

| Body weight (kg) | Alfadiar 5 KG | | Alfadiar 20 KG | | Alfadiar 40 KG | |
|------------------|---------------|---------|----------------|---------|----------------|---------|
| | Morning | Evening | Morning | Evening | Morning | Evening |
| 0 – 1.25 kg | ▢ | ▢ | | | | |
| >1.25 – 2.5 kg | ⊔ | ⊔ | | | | |
| > 2.5 – 3.75 kg | ⊕ | ⊕ | | | | |
| >3.75 – 5 kg | ⊕ | ⊕ | | | | |
| > 5 – 6.25 kg | ⊕ ▢ | ⊕ ▢ | | | | |
| > 6.25 – 7.5 kg | ⊕ ⊔ | ⊕ ⊔ | | | | |
| > 7.5 – 8.75 kg | ⊕ ⊕ | ⊕ ⊕ | | | | |
| > 8.75 – 10 kg | | | ▢ | ▢ | | |
| > 10 – 15 | | | ⊕ | ⊕ | | |
| > 15 – 20 kg | | | ⊕ | ⊕ | | |
| > 20 – 25 kg | | | ⊕ ▢ | ⊕ ▢ | | |
| > 25 – 30 kg | | | ⊕ ⊔ | ⊕ ⊔ | | |
| > 30 – 35 kg | | | ⊕ ⊕ | ⊕ ⊕ | | |
| > 35 – 40 kg | | | | | ⊕ | ⊕ |
| > 40 – 50 kg | | | | | ⊕ ▢ | ⊕ ▢ |
| > 50 – 60 kg | | | | | ⊕ ⊔ | ⊕ ⊔ |
| > 60 – 70 kg | | | | | ⊕ ⊕ | ⊕ ⊕ |
| > 70 – 80 kg | | | | | ⊕ ⊕ | ⊕ ⊕ |

▢ = ¼ tablet ⊔ = ½ tablet ⊕ = ¾ tablet ⊕ = 1 tablet

Tablets can be divided into 2 or 4 equal parts to ensure accurate dosing. Place the tablet on a flat surface, with its scored side facing up and the convex (rounded) side facing the surface.



2 equal parts: press down with your thumbs on both sides of the tablet.
4 equal parts: press down with your thumb in the middle of the tablet.

ADVERSE REACTIONS

None known. If you notice any side effects not already listed in this package leaflet, please inform your veterinary surgeon.

STORAGE

Do not use after the expiry date which is stated on the label after EXP. Store below 25°C in a well closed packaging. Keep out of the sight and reach of children.

PACK SIZES

Carton box containing 1 blister of 10 tablets.

COMPLEMENTARY ANIMAL FEED

Distributor: Alfasan Diergeneesmiddelen B.V.

Manufacturer: Lelypharma B.V.

License number 40101